

NEBULA X1 Bundle

The World's First Cinema-Grade Outdoor Entertainment System

Google TV

NETFLIX

YouTube

hulu

prime video



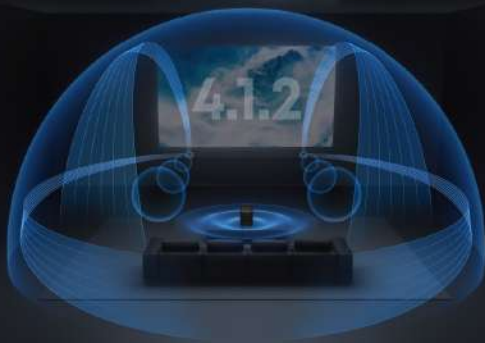
Dolby
VISION

Dolby
AUDIO



Wireless 4.1.2 Surround Sound

200W FlexWave Dolby Audio



AI Spatial Adaptation

IEA 5.0



MOTION ZOOM

0.9:1 - 1.5:1 Short to Long Throw

Liquid Cooling and Auto Micro Gimbal

25°



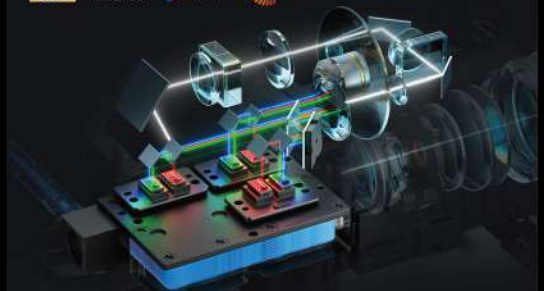
4K Triple Laser Engine

4K
UHD

3500
ANSI Lumens

110%
Rec. 2020

LASER
FORCED

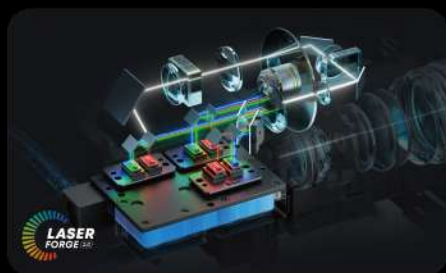


14-Element All-Glass Lens



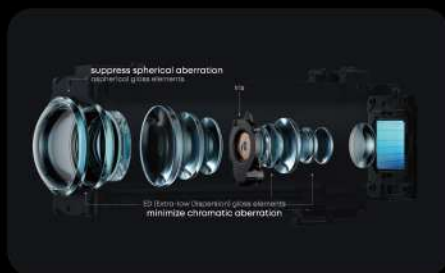
5000:1 Native Contrast

Go All Out in Cinematic Brilliance



4K Triple Laser Engine for Peak Brightness and Clarity

Our patented triple laser engine features an industry-first U-shaped laser optical path for brighter, sharper visuals while reducing volume by 50%.



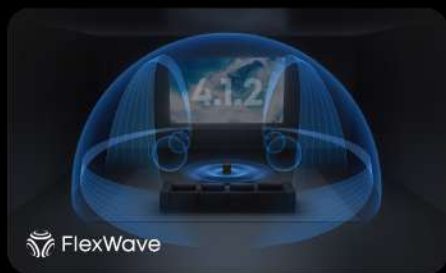
Cinema-Grade All-Glass Lens for Clarity That Lasts

The first smart projector to feature a 14-element all-glass lens, delivering superior clarity, thermal stability, and long-lasting focus.



See Every Shade of Darkness with Ultra-High Contrast

A 6-blade dynamic iris and NEBULA's dynamic contrast algorithm deliver a 5,000:1 native contrast and a 56,000:1 dynamic contrast, revealing fine details even in the dark.



Sound That Moves Around You

Let the depth and immersion of 4.1.2 surround sound take you on a cinematic adventure.



One-Click Adaptation, Even in the Tightest Spaces

AI Spatial Adaptation intelligently scans your projection surface and perfectly adjusts the image to the best position, size, and clarity in just one click.



Industry-First Liquid Cooling System

The liquid cooling system improves heat dissipation by 15%, reduces size by 30%, and lowers noise to 26 dB.

Specs

Model Number

D2351, N2040

Size

282 × 186 × 245.5 mm / 11.1 × 7.3 × 9.7 in
(With Handle Retracted)

Weight

6.2 kg / 13.7 lb

Color

Gray

Hardware

CPU: Quad-Core ARM Cortex-A55
GPU: ARM Mali-G52 MC1
RAM / ROM: 2 GB / 32 GB
Speakers: 15W ×2 + 5W ×2 (Dolby Audio Supported)

Software

OS: Google TV (with Official Netflix)
Modes: Projector Mode / Bluetooth Speaker Mode
Screen Mirroring: Google Cast Built-In, AirPlay (via NEBULA Cast)

Controls

Remote Control: IR / Bluetooth Remote
Touch Control: Touch Buttons
App Control: NEBULA Connect App (Android and iOS)
Voice Control: Built-In Google Voice Assistant

Carry Case

Capacity: 18L
Exterior: 900D Oxford Fabric (Durable and Water-Resistant)
Interior: Soft Velvet Lining (Shock-Absorbing and Scratch-Resistant)
Screen Mirroring: Google Cast Built-In

Display

Display Technology: DLP 0.47" DMD
Resolution: 3840 × 2160
Light Source: RGB Laser
Brightness: 3,500 ANSI Lumens
Color Gamut: 110% Rec. 2020
Color Accuracy: $\Delta E \leq 0.8$
Native Contrast Ratio: 5,000:1
Dynamic Contrast Ratio: 56,000:1
Light Source Lifespan: 30,000 Hours
Aspect Ratio: 16:9
Throw Ratio: 0.9:1 to 1.5:1
Offset: 100%
3D Content Compatibility: Yes (DLP Link 3D Glasses Required)
Focus Adjustment: Auto / Manual
Projection Mode: Front / Rear / Front Ceiling / Rear Ceiling
Keystone Correction: Auto (Vertical $\pm 40^\circ$), Auto (Horizontal $\pm 30^\circ$)
MEMC: Yes
Interface: DC-IN, HDMI 2.1 (eARC), HDMI 2.1, USB-A, USB-C, Audio-Optical

Wireless Satellite Speakers

Audio Channel: 4.1.2 Surround Sound
Connectivity: Wi-Fi
Power Output: 80W ×2
Water and Dust Resistance: IP54
USB-C Input: Up to 20V = 1.5A (30W)
Battery Life: Up to 8 Hours
Weight: 1.5 kg ×2
Dimensions: 265 × 113 × 78 mm
Latency: < 25 ms

What's in the Box

NEBULA X1: NEBULA X1, AC Cable, Adapter, Quick Start Guide, Remote Control, AAA Battery ×2

Accessory Pack: NEBULA X1 Carry Case, Wireless Satellite Speaker (2-Pack), Wireless Microphone (2-Pack)

Wireless Microphones

Connectivity: 2.4GHz Proprietary Protocol
Battery Life: Up to 40 Hours
Battery Capacity: 2,600 mAh
USB-C Input: Up to 5V = 1.5A (7.5W)
Weight: 270 g ×2
Dimensions: 218 × 42 mm
Latency: < 15 ms