

TAGA[®]

CHARMONY

To Achieve Glorious Acoustics

TTP-300

MM/MC PHONO AMPLIFIER



Instruction Manual

Introduction

TTP-300 is a miniature phono amplifier, which accepts turn cables equipped with MM and MC cartridges so you can enjoy music from your favorite vinyl records. The analogue output allows easy connection to a line input of your amplifier.

Key features:

- Front MM/MC selector for easy switching
- Very rigid and luxurious steel-aluminum casing provides perfect shielding of the phono stage
- Very accurate RIAA equalization
- Integrated Circuits with very low noise level
- Extremely low output impedance
- Gold-plated RCA sockets

Cleaning

Do not use strong or abrasive cleaners. Use a dry, soft cloth for cleaning.

Specifications

Full technical specifications are available on the www.TagHarmony.com website.

Contents

Safety Instructions	3
Important Safety Instructions	4
Front and Rear Panel	5
Hooking Up the Amplifier	6
Operation	7
Specifications	7

Safety Instructions

IMPORTANT

READ THIS SECTION CAREFULLY BEFORE PROCEEDING!



CAUTION

**RISK OF ELECTRIC SHOCK
DO NOT OPEN**



WARNING: TO REDUCE THE RISK OF FIRE OR ELECTRIC SHOCK, DO NOT EXPOSE THIS PRODUCT TO RAIN OR MOISTURE. DO NOT REMOVE CHASSIS (OR BACK). NO USER-SERVICEABLE PARTS INSIDE. REFER SERVICING TO QUALIFIED SERVICE PERSONNEL.



The triangle containing a lightning symbol is intended to alert the user to the presence of uninsulated dangerous voltages within the product's enclosure that may be of sufficient magnitude to constitute a risk of electric shock to persons.



An exclamation mark in a triangle is intended to alert the user to the presence of important operating and maintenance (servicing) instructions in the literature accompanying the appliance.

WARNING: TO REDUCE THE RISK OF FIRE OR ELECTRIC SHOCK, DO NOT EXPOSE THIS APPARATUS TO RAIN OR MOISTURE, AND OBJECTS FILLED WITH LIQUIDS, SUCH AS VASES, SHOULD NOT BE PLACED ON THIS APPARATUS.

CAUTION: TO PREVENT ELECTRIC SHOCK, MATCH WIDE BLADE OF PLUG TO WIDE SLOT, FULLY INSERT.

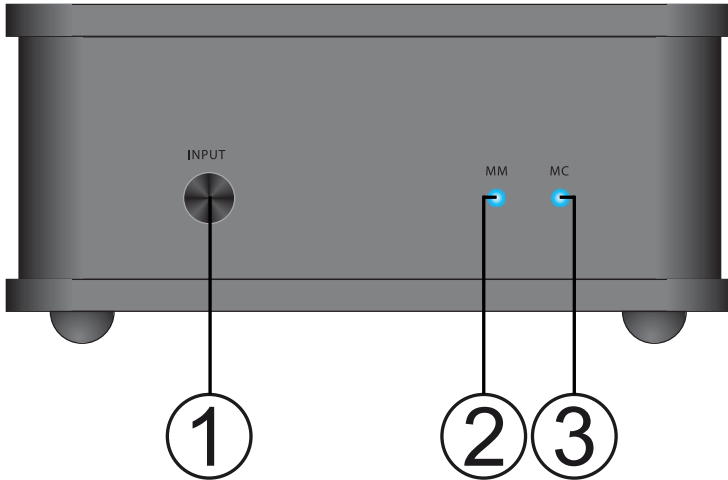
CAUTION: FOR CONTINUED PROTECTION AGAINST RISK OF FIRE, REPLACE THE FUSE ONLY WITH THE SAME AMPERAGE AND VOLTAGE TYPE. REFER REPLACEMENT TO QUALIFIED SERVICE PERSONNEL.

WARNING: UNIT MAY BECOME HOT. ALWAYS PROVIDE ADEQUATE VENTILATION TO ALLOW FOR COOLING. DO NOT PLACE NEAR A HEAT SOURCE, OR IN SPACES THAT CAN RESTRICT VENTILATION.

Important Safety Instructions

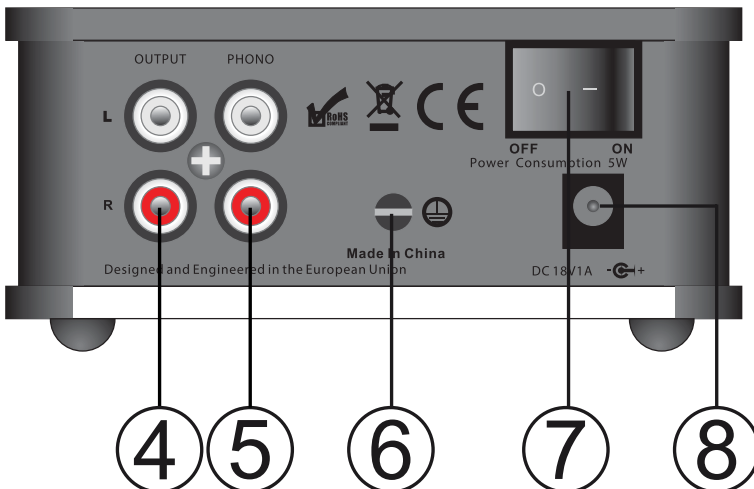
1. Read Instructions – All the safety and operating instructions should be read before the product is operated.
2. Retain Instructions – The safety and operating instructions should be retained for future reference.
3. Heed Warnings – All warnings on the product and in the operating instructions should be adhered to.
4. Follow Instructions – All operating and use instructions should be followed.
5. Cleaning - Unplug this product from the wall outlet before cleaning. Do not use liquid cleaners or aerosol cleaners. Use a damp, soft cloth for cleaning.
6. Water and Moisture - Do not use this product near water - for example, near a bath tub, wash bowl, kitchen sink or laundry tub; in a wet basement; or near a swimming pool; and the like.
7. Accessories - Do not place this product on an unstable cart, stand, tripod, bracket or table. The product may fall, causing serious injury to a child or adult, and serious damage to the product. Use only with a cart, stand, tripod, bracket or table recommended by the manufacturer, or sold with the product. Any mounting of the product should follow manufacturer's instructions and should use a mounting accessory recommended by the manufacturer.
8. Ventilation - Slots and openings in the cabinet are provided for ventilation and to ensure reliable operation of the product and to protect it from overheating, and these openings must not be blocked or covered. The openings should never be blocked by placing the product on a bed, sofa, rug, or other similar surface. This product should not be placed in a built-in installation such as a bookcase or rack unless proper ventilation is provided or the manufacturer's instructions have been adhered to.
9. Power Sources - This product should be operated only from the type of power source indicated on the marking label. If you are not sure of the type of power supply to your home, consult your product dealer or local power company. For products intended to operate from battery power, or other sources, refer to the operating instructions.
10. Grounding and Polarization - This product may be equipped with a polarized alternating-current line plug (a plug having one blade wider than the other). This plug will fit into the power outlet only one way. This is safety feature. If you are unable to insert the plug fully into the outlet, try reversing the plug. If the plug should still fail to fit, contact your electrician to replace your obsolete outlet. Do not defeat the safety purpose of the polarized plug.
11. Power-Cord Protection - Power supply cords should be routed so that they are not likely to be walked on or pinched by items placed upon or against them, paying particular attention to cords at plugs, convenience receptacles, and the point where they exit from the product.
12. Lightning - For added protection for this product during a lightning storm, or when it is left unattended and unused for long periods of time, unplug it from the wall outlet and disconnect the antenna or cable systems. This will prevent damage to the product due to lightning and power-line surges.
13. Overloading - Do not overload wall outlets, extensions cords, or integral convenience receptacles as this can result in a risk of fire or electric shock.
14. Object and Liquid Entry - Never push objects of any kind into this product through openings as they may touch dangerous voltage points or short-out parts that could result in a fire or electric shock. Do not expose this apparatus to dripping or splashing, and ensure that no objects filled with water, such as vases, are placed on the apparatus.
15. Servicing - Do not attempt to service this product yourself as opening or removing covers may expose you to dangerous voltage or other hazards. Refer all servicing to qualified service personnel.
16. Damage Requiring Service - Unplug this product from wall outlet and refer servicing to qualified personnel under the following conditions:
 - When power supply cord or plug is damaged;
 - If liquid has been spilled, or objects have fallen into product;
 - If the product does not operate normally by following the operating instructions. Adjust only those controls that are covered by the operating instructions as an improper adjustment of other controls may result in damage and will require extensive work by a qualified technician to restore the product to its normal operation;
 - If the product has been dropped or damaged in any way;
 - If the product exhibits a distinct change in performance - this indicates a need for service.
17. Replacement Parts - When replacement parts are required, be sure the technician has used replacement parts specified by the manufacturer or have the same characteristics as the original part. Unauthorized substitutions may result in fire, electric shock, or other hazards.
18. Safety Check - Upon completion of any service or repairs to this product, ask the service technician to perform safety checks to determine that the product is in proper operating condition.
19. Wall or Ceiling Mounting - The product should be mounted to a wall or ceiling only as recommended by the manufacturer.
20. Heat - The product should be situated away from heat sources such as radiators, heat registers, stoves, or other products (including amplifiers) that produce heat.
21. [Refers to products equipped with vacuum tubes]
Tube Cage - For your safety and to protect the vacuum tubes this product may be equipped with the factory installed vacuum tube cage.
It is not recommended to remove the cage unless it is required to change the vacuum tubes.
When the cage is removed - do not touch the vacuum tubes - they may be hot and burn the skin!

Front and Rear Panel



Front Panel:

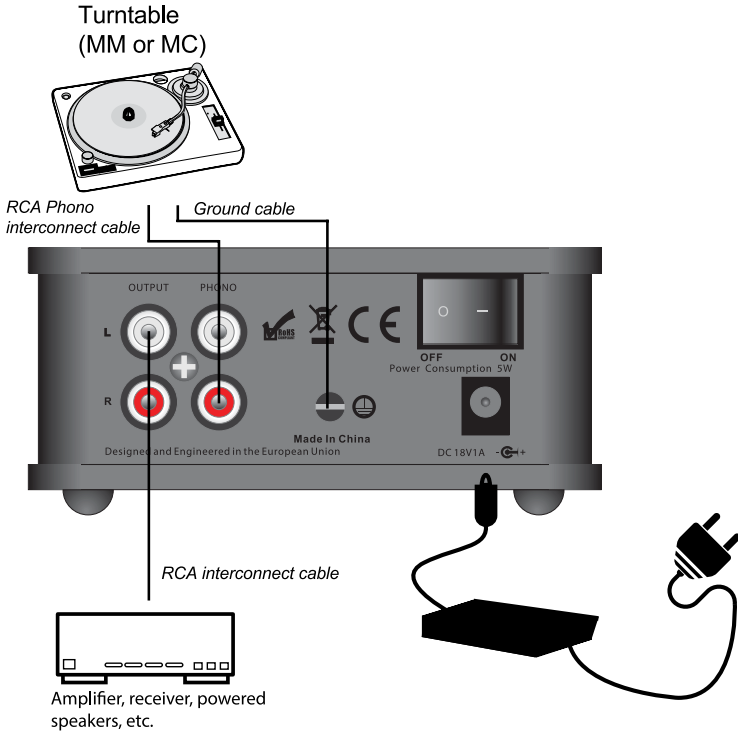
1. MM / MC Phono selector
2. MM Phono LED indicator
3. MC Phono LED indicator



Rear panel:

4. Analog Stereo RCA Line output
5. Analog Stereo RCA Phono input
6. Phono Ground Screw
7. Power Switch (I – ON / O – OFF)
8. DC Adapter Input Socket

Hooking Up the Amplifier



1. Make sure the phono amplifier is turned off (the Power Switch is in the „O - OFF” position and the DC Adapter Cable is removed).
2. Make sure that your main audio amplifier or receiver, to which you want to connect this phono amplifier, is turned off.
3. Using an RCA Phono interconnect cable (not supplied with this product) connect the turntable to the PHONO input of this phono amplifier.
4. Screw in a ground cable of the turntable to the Phono Ground Screw.
5. Using an RCA interconnect cable (not supplied with this product) connect OUTPUT of this phono amplifier to the line input of your main audio equipment (amplifier, receiver, powered speakers etc.).
6. Your phono amplifier is ready for operation.

Operation

1. Plug the DC Adapter Power Cable to the phono amplifier and connect the adapter with the electrical outlet.
2. Turn on the phono amplifier – press the Power Switch (the Power Switch should be in the position “I - ON”).
3. The MM Phono LED indicator will lit blue and the phono amplifier is ready to work with turntables equipped with the MM cartridge.
The MM option is set as a factory default each time the phono amplifier is turned on.
4. If your turntable is equipped with the MC cartridge - press the MM / MC Phono selector once – the MC Phono LED indicator will lit blue.
5. Turn on your main audio equipment (amplifier, receiver, powered speakers etc.), choose the line input to which this phono amplifier is connected, turn on the turntable and start playback.

Note!

Turn ON procedure: make sure to turn on the phono amplifier firstly and then your main audio equipment (amplifier, receiver, powered speakers etc.).

Turn OFF procedure: make sure to turn off the phono amplifier after your main audio equipment (amplifier, receiver, powered speakers etc.) is off.

Specifications

Input Impedance:	MM: 47Kohms/120pF MC: 100ohms/120pF
Gain:	MM: 40dB MC: 60dB
THD:	MM: 0.01% MC: 0.05%
Output Voltage:	MM: 300mV at 3mV/1kHz MC: 300mV at 0.3mV/1kHz
Noise Floor:	MM: 86dB (94dB - A weighted) MC: 68dB (75dB - A weighted)
Max Output:	9.5V/1kHz
RIAA Equalisation:	20Hz - 20kHz / max. 0.5dB
Inputs:	RCA Phono (MM/MC)
Outputs:	RCA Pre-Out
DC Adapter, Power Consumption:	DC 12V, 2W
Dimensions (H x W x D):	5.4 x 11.3 x 11.3 cm
Weight (net):	0.7 kg / pc.

We reserve the right to change the technical data and the design of the product without notice as a result of further development.

We strongly advise to contact a professional installer or dealer in order to install TAGA Harmony products.

We recommend using high quality TAGA Harmony cables and other installation accessories.

Kit Content:

Phono Amplifier	1EA
DC Adapter	1EA
Power Cable	1EA
Instruction Manual	1EA



Your product is marked with the symbol as showed on the left.
For EU (European Union) member users:
This product has been tested and found in compliance with requirements of the European Community 2014/30/EU (EMC) & 2014/35/EU (LVD) directives.



IMPORTANT!

Your product is marked with the symbol as showed on the left.
For EU (European Union) member users:

According to the WEEE (Waste electrical and electronic equipment) Directive, do not dispose of this product as household waste or commercial waste. Waste electrical and electronic equipment should be appropriately collected and recycled as required by practices established for your country.
For information on recycling of this product, please contact your local authorities, your household waste disposal service or the shop where you purchased the product.

TAGA EUROPE

POLPAK POLAND Sp. z o.o.
AL.JEROZOLIMSKIE 333A
05-816 REGULY k/WARSZAWY, POLAND
Email: Sales@TagaHarmony.com

www.TagaHarmony.com