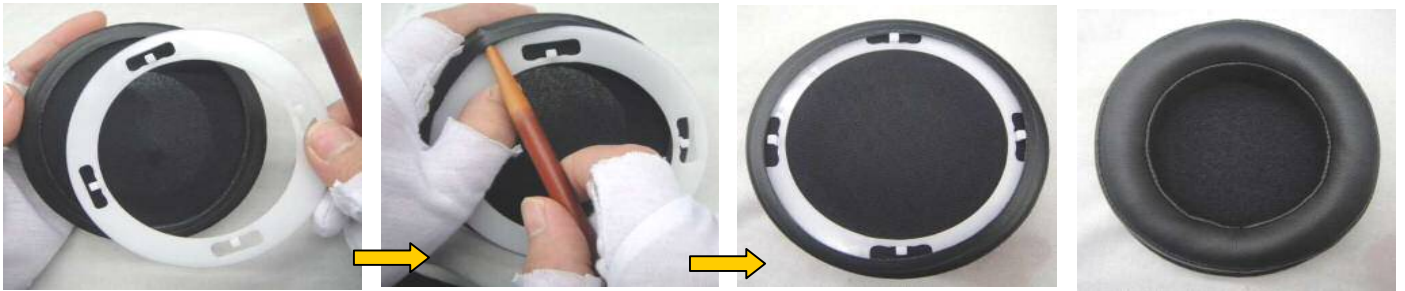


1. As shown below, with plastic hook stick to stir the edge of the auxiliary panels embedded earmuffs ear jacket, earmuffs edge can not appear to float and other undesirable phenomena.

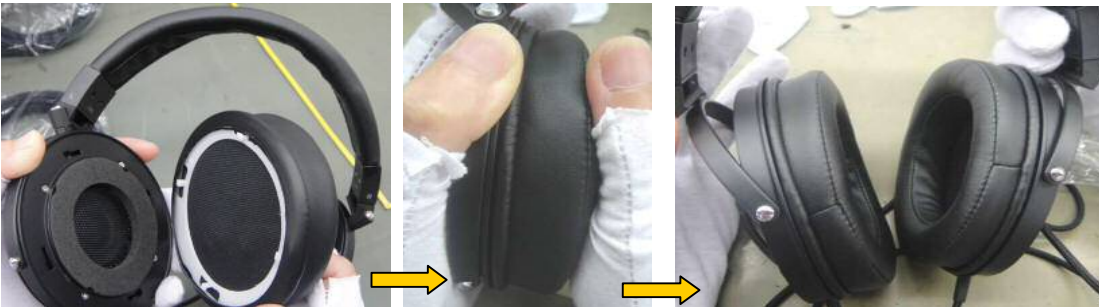


2. Shown at right, with a manual screwdriver reconfirmed the screws are fixed, and if it is loose, tighten the screws required; then tailgate gap at aligning the four screws into the disc not appear baffle float gap bit misaligned and other undesirable phenomena.



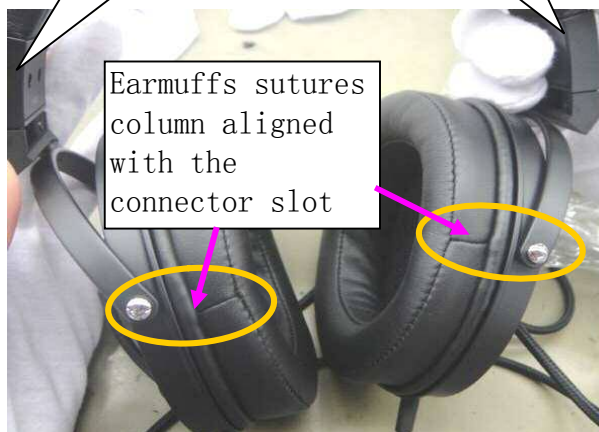
3. As shown below, the column alignment slot panels installed on the disk, and rotate into the inner card, then rotate the cover frame around twice earmuffs, confirm buckle steady, suture groove on both sides of earmuffs bit towards cosmetic cover is not printed fonts and aligned with one side connected to the column.

Note: Before loading the disc earmuffs, earmuffs check for damage, wrinkling, and other adverse dropped drained panels, to get ready for work after the yield.



Note: After fitting earmuffs, headphones hanging on the hanger, waiting for the next project, so as to avoid damage flowers and other undesirable phenomena.

Typographic not cover cosmetic



Earmuffs sutures column aligned with the connector slot